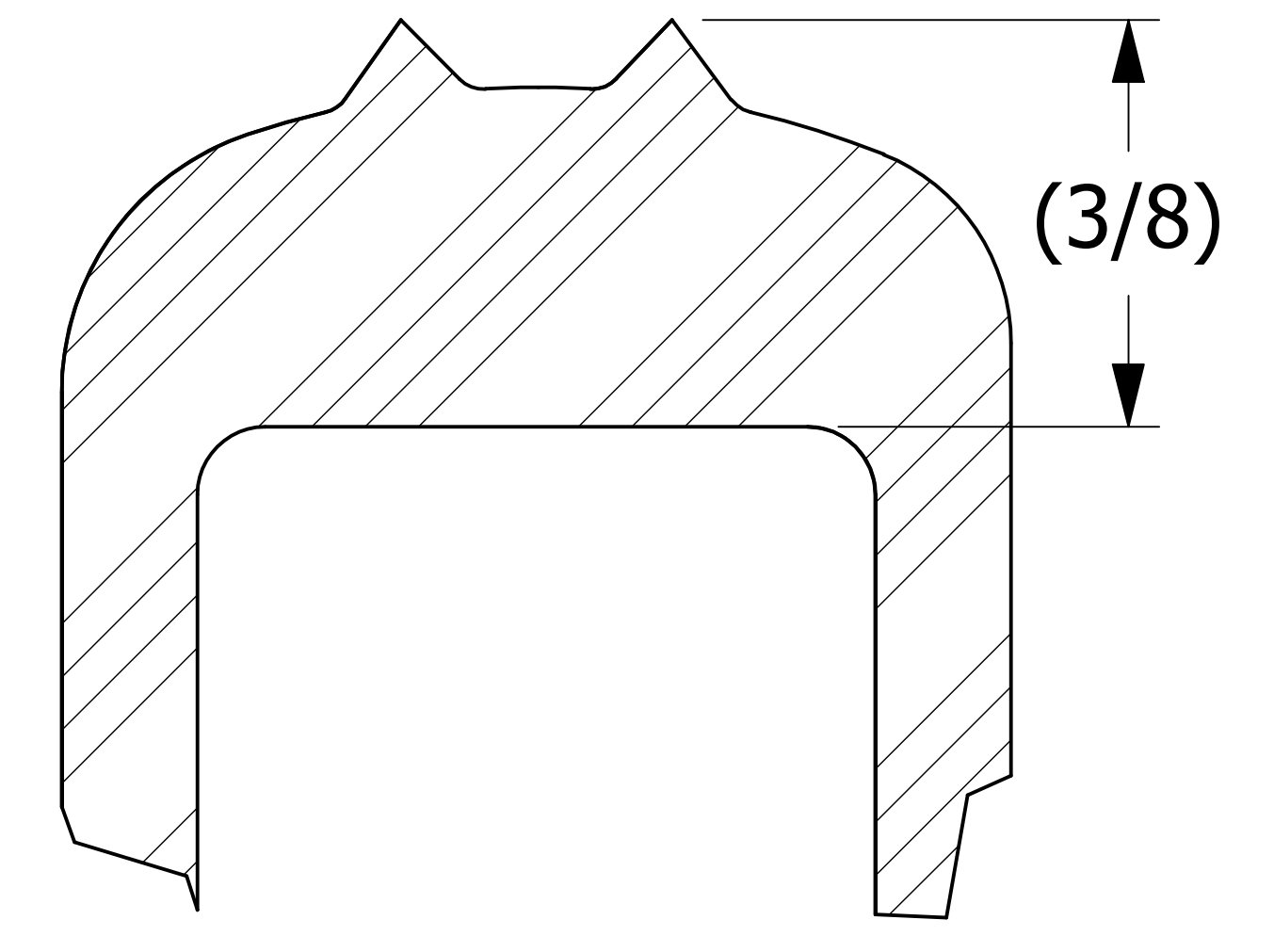
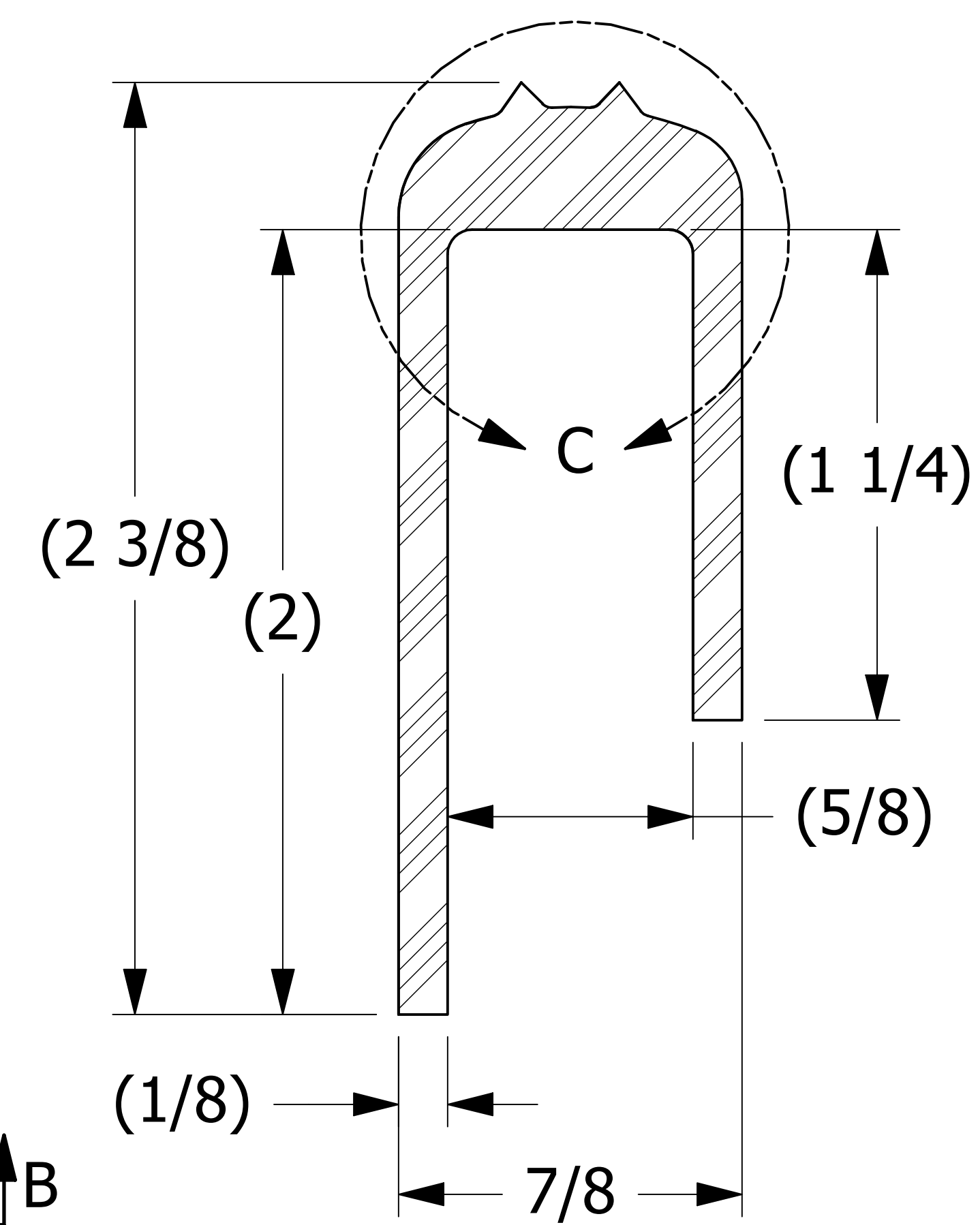
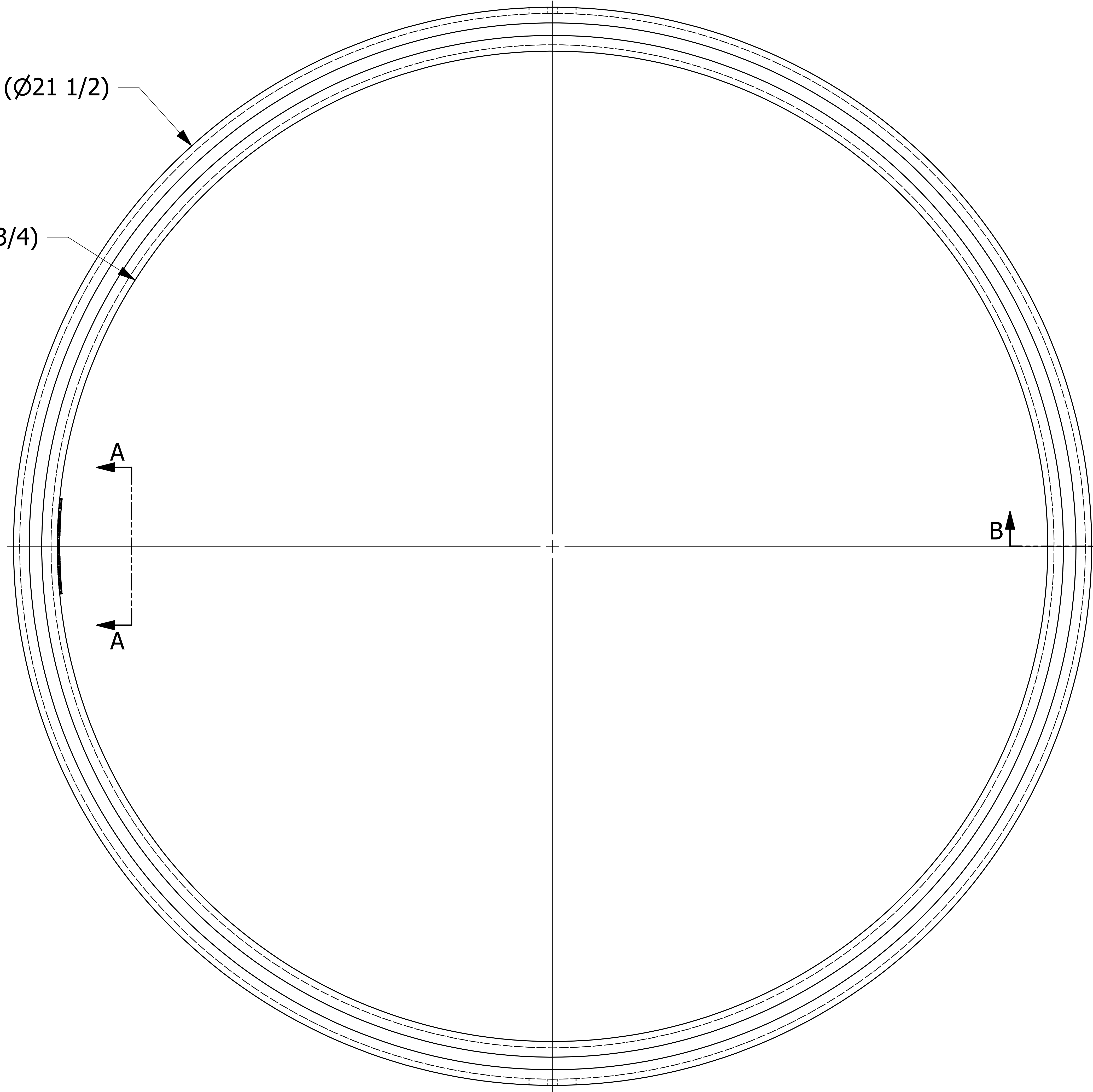


SALES DRAWING SALES DRAWING

SALES DRAWING SALES DRAWING

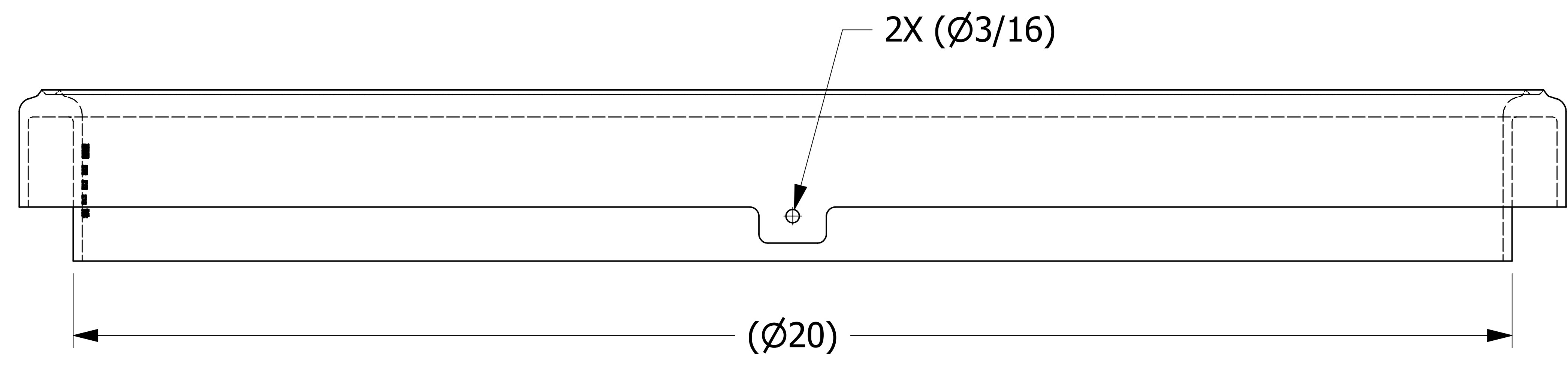


SECTION B-B
SCALE 3 : 1

DETAIL C
SCALE 6 : 1

SALCO PRODUCTS
 PART# TC20NGMY3
 MATERIAL: EPDM
 PATENTS:
WWW.SALCOPRODUCTS.COM/LEGAL

SECTION A-A
SCALE 3 : 1



REV	BY	DATE	DESCRIPTION
D	WEB	12-15-15	UPDATED PATENT INFO
C	CHL	5-15-13	ADDED TEXT HEIGHT NOTES, DETAIL "C", AND DIM R1/16
B	CHL	7-8-06	ADDED TWO TABS
A	CHL	10-26-04	NEW PART ADDED TO SYSTEM

<small>UNLESS OTHERWISE SPECIFIED DIMENSIONAL TOLERANCES FRACTIONAL: ±1/16 X.XX: ±.03 X.XXX: ±.015 ANGULAR: ±1° DEBURR ALL SHARP EDGES. ALL MACHINED SURFACES TO HAVE A 125 RMS FINISH UNLESS NOTED OTHERWISE.</small>	DRAWN BY:	CHL
	CHECKED BY:	ACC
	PROTOTYPE BY:	CHL
	PROTOTYPE DATE:	7/23/2004
	APPROVED FOR PRODUCTION BY:	ACC
THIRD ANGLE PROJECTION	PRODUCTION DATE:	10/26/2004

SALCO PRODUCTS, INC.			
PART NAME: NOZZLE GASKET 20"			
MATERIAL: BLACK EPDM DURO. 75±5			
PROJECT #:	WAG0160	SHEET #:	1 OF 1
DRAWING #:	E19410	PART #:	TC20NGMY3
SCALE: 1:1			

THIS PRINT, PROPERTY OF SALCO PRODUCTS INC. CONTAINS PROPRIETARY INFORMATION AND MUST NOT BE COPIED, REPRODUCED, OR USED DETRIMENTALLY TO OUR INTEREST.